

## Parking Options for Amtrak Stations in Ventura and Santa Barbara County

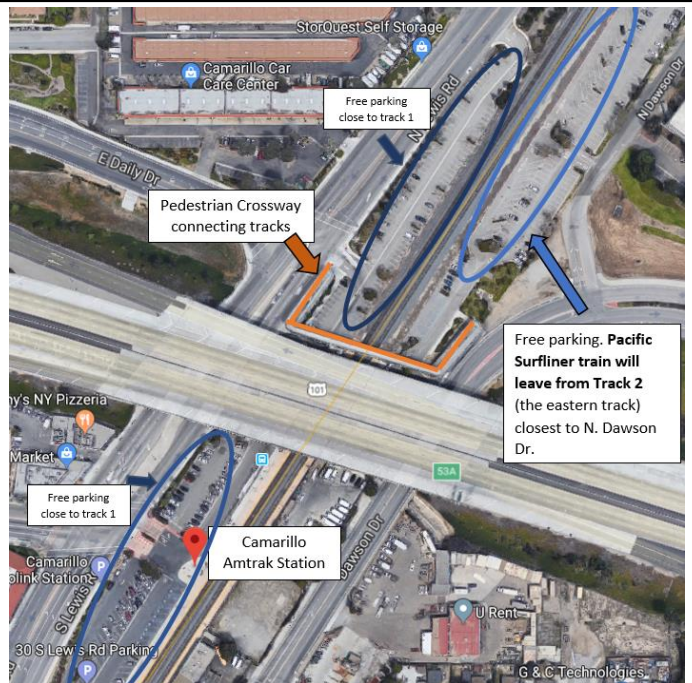
**Simi Valley** – Nearly 600 free parking spaces, 7 handicapped spaces as part of the Amtrak/Metrolink lot located at 5050 Los Angeles Ave., Simi Valley, CA 93063. Overnight parking allowed.

**Moorpark** – 270 free parking spaces, 8 handicapped spaces as part of the Amtrak/Metrolink stop located at 300 High Street, Moorpark, CA 93021. It looks like there is covered bike parking near the tracks as well. Overnight parking is allowed with a 72 hour max in designated spaces only.

**Camarillo** – 400 free parking spaces as part of the Amtrak/Metrolink stop. The closest parking options are accessible via N. Dawson Dr., not Lewis Rd. The northbound Pacific Surfliner train will leave from track 2 (the eastern track) closest to N. Dawson Dr. PLEASE NOTE: THE SOUTHBOUND TRAIN WILL STOP ON TRACK 1. YOU WILL NEED TO USE THE PEDESTRIAN BRIDGE ONCE DURING THE DAY, DEPENDING ON WHERE YOU PARK.

**Traveling Northbound on Hwy 101** – Take exit 53A for Flynn Rd., turn left onto Mission Oaks Blvd. (signs for Flynn Rd./Dawson Dr.), turn right onto N. Dawson Dr. The parking lot for track 2 will be on your left.

**Traveling Southbound on Hwy 101** – Take exit 53A for Petit St. Continue right onto Petit St. Turn right onto Dawson Dr. and then left onto N. Dawson Dr. The parking lot for track 2 will be on your left.



**Oxnard** – Parking may be limited here. Consider being dropped off at the station, carpooling or driving to a nearby station like Camarillo or Ventura. Oxnard has 110 free parking spaces, 3 handicapped spaces as part of the Oxnard Transportation Center at 201 East Fourth Street, Oxnard, CA 93030. Overnight parking is allowed. *2 hour parking limit for the 50 spaces next to the station separate from the 110 free spaces.*



**Ventura** – Free parking as part of the Ventura County Fairgrounds/Seaside Park at 10 W. Harbor Blvd., Ventura, CA 93001. Enter and show your train pass on Shoreline Dr.

## Parking at Ventura Amtrak

All cars to park along fence closest to station as cars that are shown



**Carpinteria** – 120 free parking spaces at 475 Linden Avenue. Overnight parking is allowed.

**Santa Barbara** – Parking at the Santa Barbara station is \$5 per day for train ticket holders, please validate at the Amtrak counter. This lot is managed by City of Santa Barbara Parking.

**Goleta** – Free parking available